

NORTHERN TURNPIKE EXTENSION

Citrus, Levy, Marion, and Sumter Counties

PUBLIC KICKOFF MEETING

December 7, 2021*

**5:30 - 7:30 P.M. (in-person
or virtually via GoToWebinar)**

College of Central Florida
15390 US-19, Chiefland, FL 32626

December 9, 2021*

5:30 - 7:30 P.M. (in-person)

College of Central Florida
3800 S Lecanto Highway
Lecanto, FL 34461

**REGISTER
TO ATTEND**



Maps, videos, and other information introducing the project will be available and project representatives will be present to discuss the project, answer questions, and receive comments.

Register at: www.floridasturnpike.com/NTE

Newsletter 1

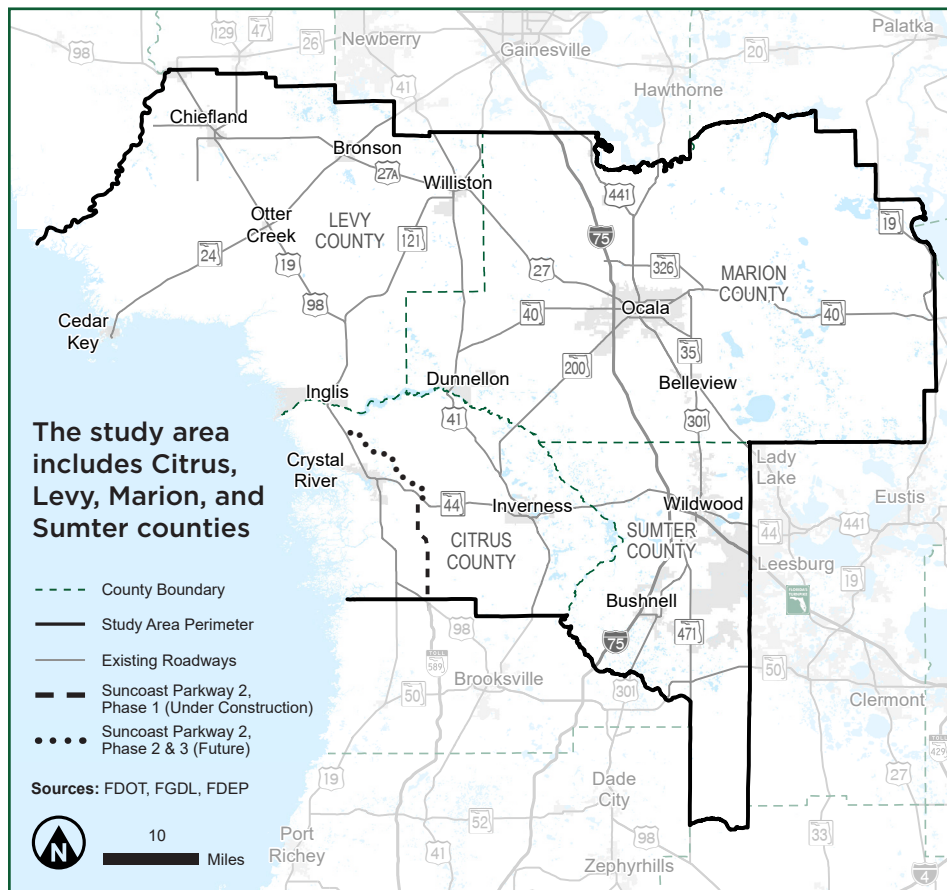
November 2021

ABOUT THE PROJECT

The Northern Turnpike Extension project is a proposed extension of Florida's Turnpike "from its northerly terminus in Wildwood to a logical and appropriate terminus as determined by the Florida Department of Transportation (FDOT)" per Senate Bill (SB) 100 (2021), codified in section 339.66(6), Florida Statutes.

The project is early in the Planning phase and is following FDOT's Alternative Corridor Evaluation (ACE) process.

STUDY AREA



PROJECT GOALS



**ENHANCE
REGIONAL
CONNECTIVITY**



**ADDRESS
REGIONAL
CONGESTION
AND SAFETY**



**ACCOMMODATE
INCREASED
TRAVEL DEMAND**



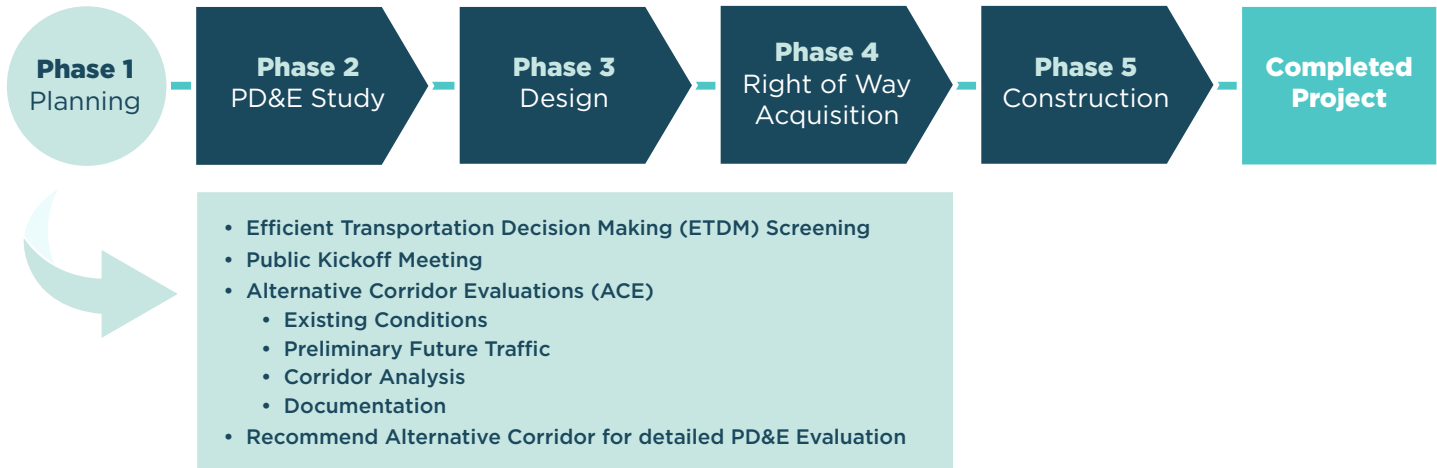
**IMPROVE
HURRICANE
EVACUATION**

*If the Public Kickoff Meeting cannot be held on December 7, 2021, it will be held on Tuesday, December 14, 2021, from 5:30 to 7:30 p.m. (virtual and in-person at the College of Central Florida, 15390 US-19, Chiefland, FL 32626). If the Public Kickoff Meeting cannot be held on December 9, 2021, it will be held on Wednesday, December 15, 2021, from 5:30 to 7:30 p.m. (in-person at the College of Central Florida, 3800 S Lecanto Highway, Lecanto, FL 34461).



PROJECT DEVELOPMENT PROCESS

WE ARE HERE



WHAT IS THE ACE PROCESS?

The Alternative Corridor Evaluation (ACE) process is used to identify, evaluate, and eliminate alternative corridors on qualifying projects prior to the Project Development and Environment (PD&E) Study. The decisions made in an ACE can be used to refine the purpose and need for a project; determine the project area; define general travel modes or corridors; describe general environmental setting for a project; identify preliminary environmental impacts and environmental mitigation; and develop and refine a range of alternatives to be considered in detail during the PD&E Study.

SCHEDULE



This schedule is preliminary and subject to change.

PUBLIC PARTICIPATION

Florida’s Turnpike Enterprise encourages the public to get involved throughout the study by providing comments, questions, and suggestions to the study team. Information will be available throughout the study through newsletters, the project webpage at www.floridasturnpike.com/NTE, at public information meetings, and through public inquiries. Public participation is solicited without regard to race, color, national origin, age, sex, religion, disability, or family status.

CONTACT

If you have any questions or comments about the project, please contact:

William Burke, PLA
 Project Manager for
 Florida’s Turnpike Enterprise (HDR)
 407-264-3142 | william.burke@dot.state.fl.us

**Para información en español,
 por favor contacte:**
Henry Pinzon, P.E.
 Turnpike Environmental Management Engineer
 407-264-3802 | henry.pinzon@dot.state.fl.us